

Quick & Easy Threaded Inserts For Urns

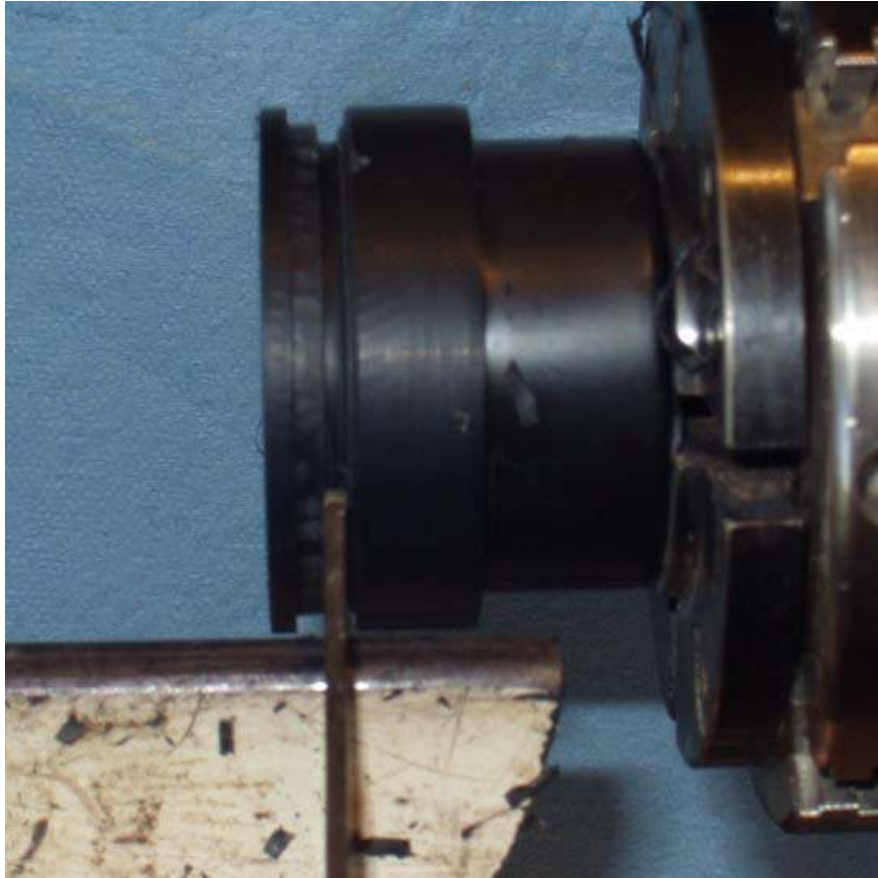
Here's how I put ABS plastic threaded inserts on my urns. Sorry for the poor photos but this was a quickie. Please note I do most of my turning outboard so the perspective may confuse you a bit.



Start with a 1 1/2" ABS drain pipe cleanout available from any hardware store.



Mount the female part in expansion jaws. Use a scrapper to remove the little gripper knobs and the raised lettering on the face of the female part. Cut a 1/8" deep groove about 1/8" in from the face of the piece to create a flange.



Then part the piece of about 1/4" thick.



Here are the female threads glued into the neck of the urn.



Grip the square end of the male part in a chuck.



Part off about $\frac{1}{4}$ " of the male threads.



Turn a tenon on the underside of the urn lid to fit the male threads. You can then reverse the lid and use the tenon to hold the lid while turning the top side.